

Lake/Dam Committee Meeting Minutes
Saturday, May 4, 2019

Meeting Called to Order

Meeting was called to order at 9:38am.

In attendance at the meeting were:

Members	Guests	Excused
Kelly Evans	Duane Landsverk	Maureen and Steve Glenn
Lou Jackson	Brian Smith	
Karen and Dave Kohler	Martha Sandquist	
John McRoberts	Mike Jensen	
Debbie Moore	Valerie Arneson	
Dorothy Powter	Deb Galbraith-Wil	
Tim Reber	Don Bird	
Linda Smith		

Chairperson's Opening Comments: Dave Kohler

Brian Smith requested a committee membership change to an inactive/non-voting member of the committee.
Mike Prather has resigned due to family needs.

Approval of Minutes

The minutes from April were approved as written. Motion made by Linda Smith and seconded by Kelly Evans.

Dock Permits/Boat Registrations:

2-285 - Lovgren - inspection is needed, given to Lou Jackson
3-42 - Nord - given to Lou Jackson
3-38 - Dahl- given to Lou Jackson
3-151 - Silva - replace floats - existing dock, grandfathered dock, given to Lou Jackson
3-321 - Glenn - permit is issued
3-295 - Frankberger - permit is issued
3-135 - Arneson - talked to member at the meeting. She is going to be revisiting her plan.
Dock sign purchase request was turned in.

Old Business

A: Review of Past Commitments

1. Dave - note to the BOD for October's Annual Meeting to add Harry Gibbons visit to the agenda. **On hold**
2. Brian Smith - Contact Debbie (or Architecture?) about ideas for the dock infraction letter. **On hold**
3. Dave Kohler is asking Roger Milliman to post on the website the current dam operations manual. **Request is in.**
4. Dave Kohler: Contact Debbie Moore to talk to John Ingemi about the compliance letter after April 16th. **Done**
5. Dave Kohler: Contact Roger Milliman to figure out the insurance question on the Park Host Duties. **Done**

B: Projects

1. Dredging Project - Mike Prather
Nothing has been done in regard to putting the log in the stream/lake.
2. Inn Island Improvements
Pending feedback from Mason County Conservation District
3. Project/Maintenance Items
There is a gas issue with the lake patrol boat.
Log Toy fishing dock has a pipe sticking up from the bottom of the lake.
Banbury Park has a bathroom sticking door.

4. Lake and Park Usage and Operation - Linda and Brian Smith and Maureen and Steve Glenn
Dave Kohler received an email from Roger Milliman about Olde Lyme Park Preliminary plan. He said the park has 12 cedar trees that are all dying from the top down. He talked about the plans they have for those trees. He also shared the discussion he has with Duane concerning removing the old wooden steps, renting an excavator, creating a parallel path down to the lower area, improving the swing set to meet safety needs as in other parks, etc. He said the next steps include: creating a budget, L/D concurrence, swing set material costs, and Mason County approval of tree removal.

C: Status of last month's motions to the Board of Directors

Motion #1: I move that LLCC put poop bag dispensers at all parks- 5. Motion made by Linda Smith and seconded by Lou Jackson. Motion carried.

After the meeting we added to the motion: currently not equipped, Olde Lyme, Banbury, Anglia, Log Toy, and Tipperary. After the vote, the CAM agreed to get the costs and have them available for the Board meeting in two weeks. The cost was estimated at around \$600. **The BOD passed this motion.**

D: Other

1. February: Motion #1: I move that the ski club proposal to establish a permanent slalom course be approved pending the availability of funds. Motion made by Kelly Evans and seconded by John McRoberts.
Yes - 9 No - 3 Motion approved. The BOD denied it.

2. Ski Club Report:

Seven (7) members of the ski Club were present at the meeting. John McRoberts, the Ski Club representative, passed out 2 course options. Both have pros and cons.

Option A: similar to the last 4 years, is a more desirable position for the water sporting community, you can see the course from the Inn, and the starting and stopping areas are better.

Option B: location of the previous stationary floatable course by Log-Toy Park. This location would not require a permit if we chose to "maintain" the course in the future as a stationary course.

Comments from the group:

Option A is perceived to be a better fishing spot, while option B is not perceived as a desirable fishing spot. Placing a slalom course allows us to continue a long standing activity on the lake.

Questions at the meeting:

Can the old submerged (floatable) course be removed in the future? Answer: Parts that are not reused if a new solution was to be put in this location could potentially be removed.

Is the submerged course fixable? Answer: No, not as a floatable course as it is far too expensive to fix the air components and fittings, however parts (existing anchors for example) could be reused if that location is preferred for a newer/maintained stationary course down the road.

The committee then reviewed the questions and comments from the various Board meetings and the Information Gathering meeting and provided the following answers and comments to the 6 topics most often expressed below:

- Cost - The BOD already took action to not fund the previously proposed stationary vertical course.
- Course vs no course - The presence of a slalom ski course on the lake is a long standing tradition at Lake Limerick (40 years). The only time you typically see the course is during 3 months of the year, June through early September. It was noted there was one recent instance of the course being left up longer. This rare and unusual occurrence was a result of numerous factors. It should be noted that the usage of the previously proposed stationary vertical course would have mitigated this issue (as it is not dependent on availability of equipment and knowledgeable resources and most importantly - the weather, in order to remove).
- Location - Option A or Option B. Option A is actually wider. Choke point? No accidents have been reported and high speed boating activities have consistently demonstrated an ability to operate with the course in the Option A location. Also, the issue with tubing by the perceived choke point is not an issue with either option because the balls, by design, are small enough to not interfere with the other activities. It should be noted that the ski course is not used when others are free skiing, wake boarding, knee boarding or tubing.

- Fishing - The proposed stationary vertical ski course would have had no horizontal obstructions, only vertical lines, which are designed to minimize fishing impacts. The portable and floatable courses have horizontal components that might occasionally impact fishing. However, only a handful of lures have been found after 4 years of using the portable course. Remember, there are significant logs, stumps, etc. on the bottom of the lake that likely pose a far more significant impact.
- Old course vs new course - The old stationary floatable course is not repairable as a stationary floatable course (air fittings). The old stationary floatable course is difficult to maintain. However, components from the old stationary floatable course, like anchors, could potentially be re-used for a new stationary vertical course if in the same location. A new stationary vertical course is far easier to maintain. It would not have a horizontal component. A new stationary vertical course has the ability for all members' ski boats to use.
- Safety/Liability - The presence of a ski course does not influence insurance rates (our rates would not go down if a course was not on the lake). It was reported that fishing accidents are almost double the amount of boating towing accidents as reported from the US Coast Guard. The tow boat driver has to have a boater safety card (if born after 1955) and an observer/flagger is required in the tow boat, all of which enhance safety.

Given the above discussion and even though both locations appear viable, usage of the temporary portable course in the Option B location to start the 2019 season appears to allow for a re-validation of that location as a viable alternative and addresses many of the concerns expressed by the community.

Motion #1: After reviewing the ski course issues raised by the community and addressing the concerns, the committee supports a slalom course on the lake. The committee puts forward two options proposed by the ski club: Option A and B. The committee supports Location B for the 2019 season as it best meets the needs of the entire LLCC community. The motion was made by Debbie Moore and seconded by Tim Reber. The Motion was carried.

3. Fishing Derby Recap - The derby had 302 derby tickets sold. 2148 raffle tickets were sold. The silent auction made \$920. Donations totaled \$1050. So the grand total of income from the Fishing Derby was \$7138. The expenses were \$5530. There were over 200 fishermen.

New Business

A: Work Team Reports

- Lake Leprechaun: Tim Reber, Maureen and Steve Glenn - No report
- Lakes Weed Treatment: Debbie Moore - Debbie has communicated with Harry Gibbons. Friday, May 31st is the survey of the lakes.
- Budget Work Team Report: Brian Smith, Debbie Moore, Tim Reber, John McRoberts, and Dave Kohler
The budget meeting date has been postponed to Sunday, May 19th at 1pm at the Kohler house. The people involved are: Dave and Karen Kohler, Debbie Moore, John McRoberts, Tim Reber, and Kelly Evans. If any other committee members would like to come they are invited.
- Dock Inspections - Lou Jackson and Steve Glenn
Lou Jackson passed out a Dock Inspection 2019 paper. They are getting ready for the next inspections and they will annotate the dock inspection paper.
L/D does is not authorized to set the amount for fine amounts.
Dave read an email from Roger Milliman about how the dock permits are handled in the office. There was some misinformation in the email that requires follow-up.
Debbie Moore passed out her dock infraction May 3rd summary.
- Newsletter: Debbie Moore
The next newsletter is due in June.

B: Other

1. Park Host Meeting
Dave has to schedule a meeting with the Park Hosts and the Smith's and Roger Milliman.

2. Park Host Guidelines

A marked version was passed out. Dave read the proposed changes. The other changes from the committee will be sent back to Roger Milliman.

Motion #2 I move that the Lake Dam Committee forwards the updated LLCC Park Host Duties and Information sheet to the BOD for approval. Motion made by Debbie Moore and seconded by Lou Jackson. Motion carried.

Guest Input/Correspondence

Review of New Commitments

1: Debbie Moore will contact Roger Milliman about the L/D Committee dock permit protocol and processes.

2: Dave Kohler will send the Park Host Duties with changes to Roger Milliman.

Motions Recommended for Action/Review by the Board of Directors

Motion #1: After reviewing the ski course issues raised by the community and addressing the concerns, the committee supports a slalom course on the lake. The committee puts forward two options proposed by the ski club: Option A and B. The committee supports Location B for the 2019 season as it best meets the needs of the entire LLCC community. The motion was made by Debbie Moore and seconded by Tim Reber. The Motion was carried.

Motion #2 I move that the Lake Dam Committee forwards the updated LLCC Park Host Duties and Information sheet to the BOD for approval. Motion made by Debbie Moore and seconded by Lou Jackson. Motion carried.

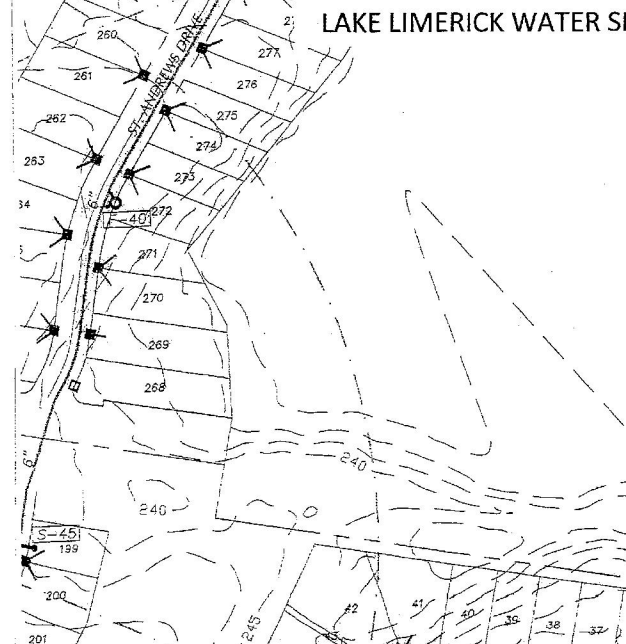
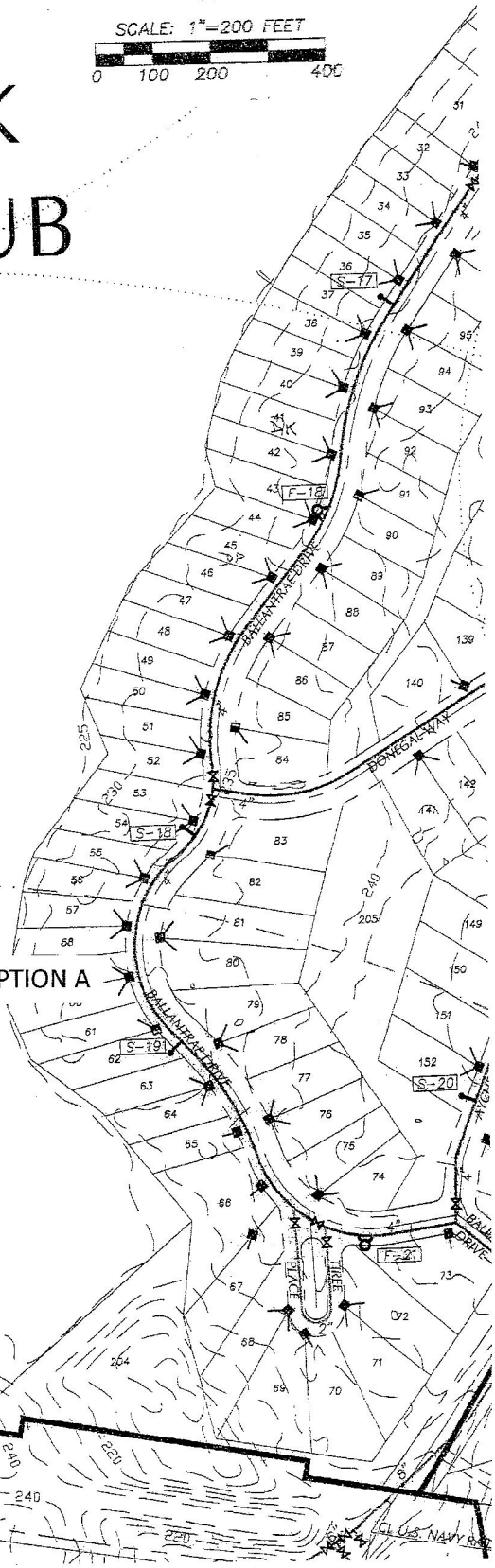
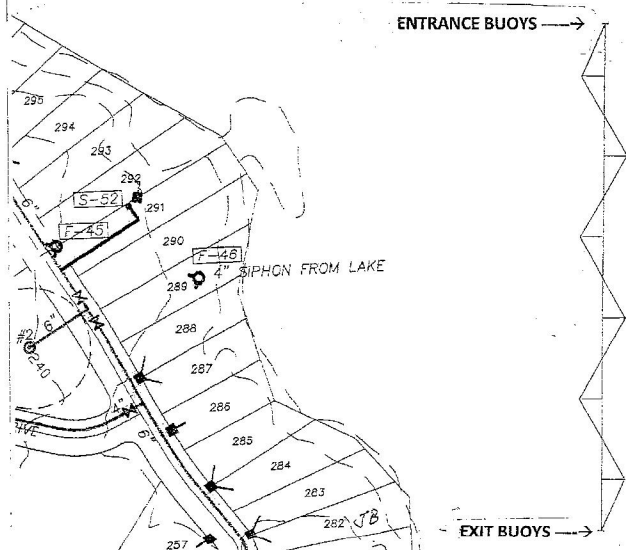
Meeting Adjourned

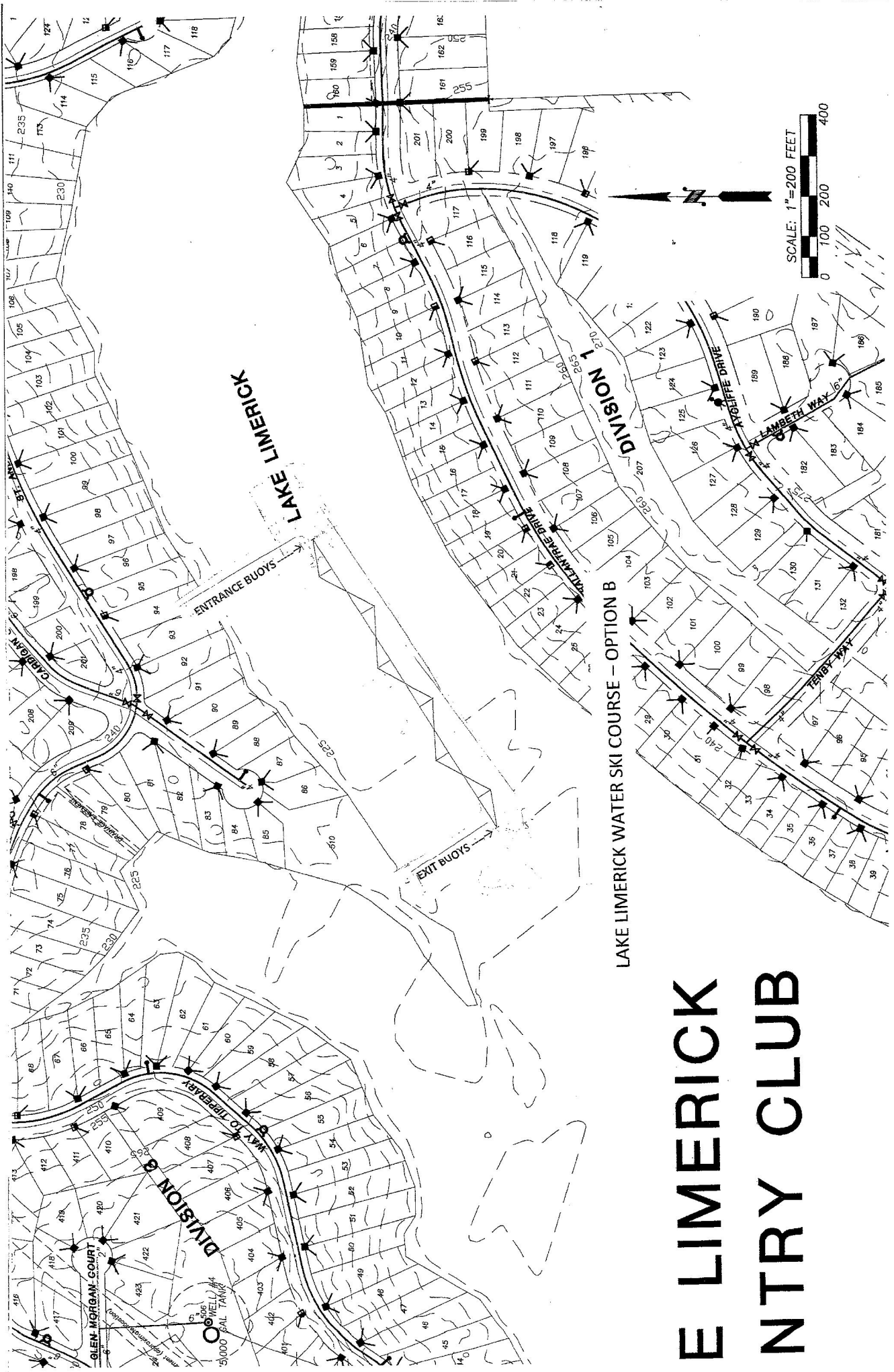
The meeting was adjourned at 12:40pm

Minutes respectfully submitted by Karen Kohler, L/D Secretary



LAKE LIMERICK COUNTRY CLUB





LAKE LIMERICK WATER SKI COURSE - OPTION B

E LIMERICK NTRY CLUB